

# Unveiling the Enigmatic Convict Cichlid: A Comprehensive Guide to the Bradford Risbert

In the mesmerizing realm of freshwater aquariums, where vibrant hues and graceful movements intertwine, there lies a captivating species that has garnered immense admiration from hobbyists around the globe: the Convict Cichlid, scientifically known as *Amatitlania siquia*. Among its extraordinary genus, one particular variant stands out with its captivating appearance and intriguing history: the Bradford Risbert Convict Cichlid.

## A Legacy of Discovery: Bradford Risbert and His Eponymous Cichlid





## The Convict Cichlid by Bradford Risbert

★★★★☆ 4.6 out of 5

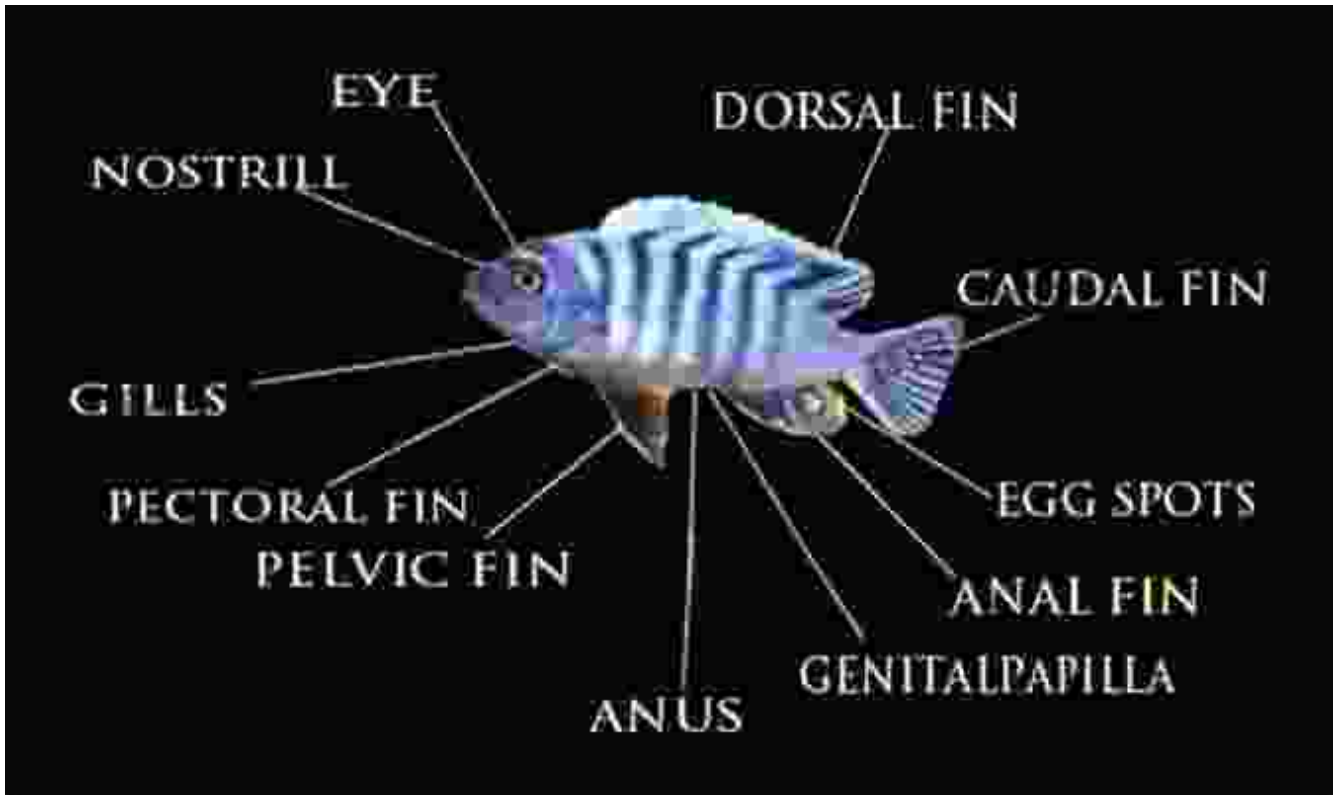
Language : English  
File size : 915 KB  
Text-to-Speech : Enabled  
Screen Reader : Supported  
Enhanced typesetting : Enabled  
Print length : 14 pages  
Lending : Enabled



The story behind the Bradford Risbert Convict Cichlid is as fascinating as the fish itself. In 1987, a renowned breeder named Bradford Risbert embarked on a meticulous breeding program with a desire to cultivate a unique and visually stunning strain of Convict Cichlid.

After years of diligent selection and hybridization, Risbert's efforts bore fruit. He successfully developed a Convict Cichlid characterized by an extraordinary pattern of crisp, bold black and white stripes, reminiscent of a zebra's coat. This distinctive feature set the Bradford Risbert Convict Cichlid apart from its kin and catapulted it to fame within the aquarium community.

### **Aesthetics and Anatomy: Unveiling the Captivating Characteristics**



The Bradford Risbert Convict Cichlid showcases a captivating array of physical attributes that have made it a favorite among aquarium enthusiasts:

- **Striking Zebrafish Pattern:** The defining characteristic of this cichlid is its remarkable pattern of black and white stripes that run horizontally across its body, creating an eye-catching zebra-like effect.
- **Vibrant Coloration:** Beyond the striking stripes, the Bradford Risbert Convict Cichlid exhibits a vibrant color palette. Its body shimmers with shades of blue, green, and yellow, adding depth and richness to its overall appearance.
- **Sturdy Build:** This cichlid possesses a robust and muscular body, with a slightly flattened head and a moderately pointed snout. Its fins are

well-developed, allowing for agile and graceful movements in the water.

- **Sexual Dimorphism:** As with many cichlids, the Bradford Risbert Convict Cichlid exhibits sexual dimorphism, with males typically larger and more colorful than females. Males also display more pronounced stripes and longer, pointed dorsal fins.

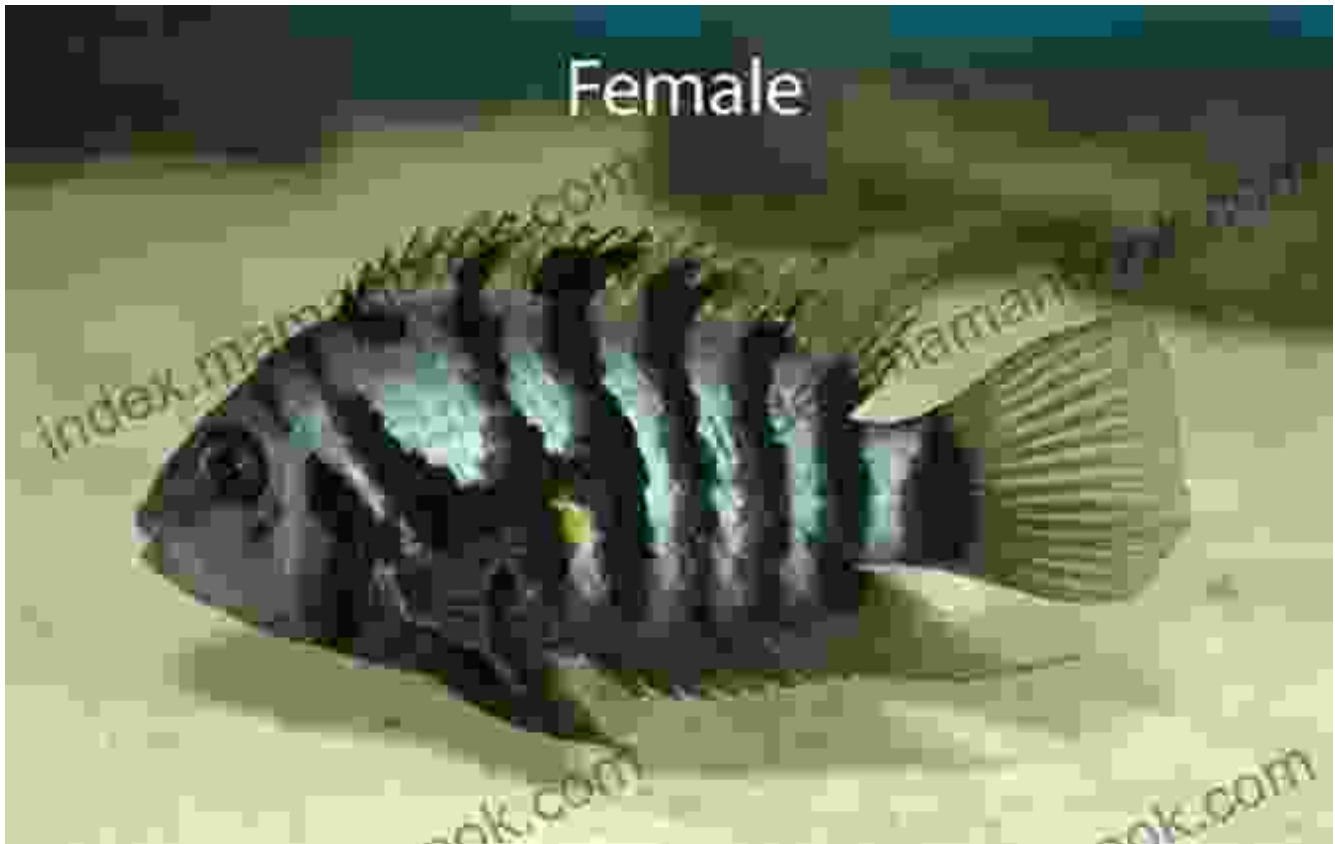
### **Habitat and Distribution: Embracing the Waters of Central America**



In the wild, the Convict Cichlid, including the Bradford Risbert variant, inhabits the freshwater ecosystems of Central America, primarily in the countries of Nicaragua, Honduras, and Guatemala.

These cichlids prefer slow-moving bodies of water such as rivers, streams, and lagoons. They are often found near vegetation or submerged roots, which provide shelter and breeding grounds.

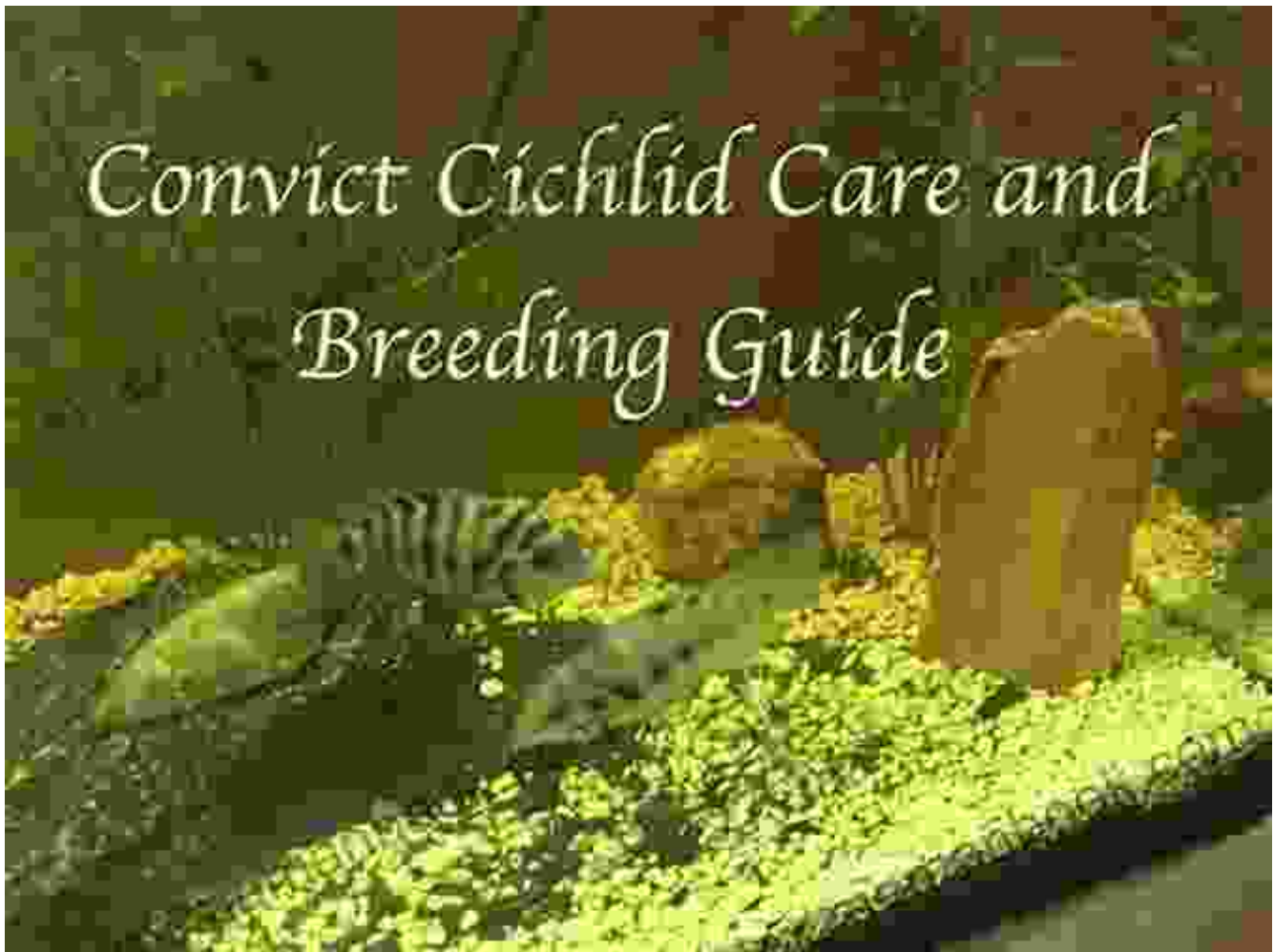
### **Behavior and Temperament: Understanding the Cichlid's Dynamics**



Like many cichlids, the Bradford Risbert Convict Cichlid is known for its territorial and somewhat aggressive behavior. They establish and defend their territory within the aquarium, which can lead to confrontations with other tankmates, particularly during breeding season.

However, this aggression is primarily directed towards members of the same species. If provided with adequate space and hiding places, they can coexist peacefully with other fish species, especially those that occupy different levels of the aquarium.

## Care and Maintenance: Nurturing the Convict Cichlid's Well-being



To ensure the well-being of your Bradford Risbert Convict Cichlid, it is essential to provide an environment that mimics its natural habitat and caters to its specific needs:

- **Tank Size and Setup:** Keep a minimum tank size of 20 gallons for a single pair or a small group. The tank should include plenty of hiding places, such as caves, rocks, and driftwood, as well as live plants.
- **Water Parameters:** Ideal water conditions for the Bradford Risbert Convict Cichlid include a pH range between 6.5 to 7.5, a hardness of 5 to 15 dGH, and a temperature between 75 to 85°F (24 to 29°C).

- **Diet:** Feed a varied diet consisting of live, frozen, and commercial foods. Include high-quality protein sources such as brine shrimp, bloodworms, and small fish, as well as vegetable matter.
- **Maintenance:** Perform regular water changes of approximately 20-25% weekly to maintain water quality and remove waste. Use a gravel vacuum to remove detritus from the substrate.

### **Breeding: Witnessing the Cycle of Life**



Breeding the Bradford Risbert Convict Cichlid can be an exciting and rewarding experience. Here's a step-by-step guide to help you succeed:

- **Selecting a Breeding Pair:** Choose a mature and healthy pair, exhibiting compatibility and good physical condition.

- **Preparing the Breeding Tank:** Set up a separate breeding tank with a capacity of at least 10 gallons. Include plenty of hiding places and spawning substrates like flat stones or clay flower pots.
- **Raising the Fry:** After spawning, remove the parents and raise the fry in a separate tank. Feed them infusoria or brine shrimp nauplii and perform regular water changes to ensure optimal growth.

### **Additional Tips for Enthusiasts: Enhancing Your Convict Cichlid Experience**



- **Provide Adequate Territory:** To reduce aggression, ensure each pair has a well-defined territory with ample hiding places.
- **Offer a Variety of Foods:** Cater to the diverse nutritional needs of your cichlids by providing a balanced diet.



- **Monitor Water Quality:** Regularly test water parameters and adjust as necessary to ensure optimal conditions for your fish.
- **Control Breeding:** If you don't intend to breed your cichlids, consider separating males and females.
- **Enjoy the Show:** Observe the fascinating social dynamics and behaviors of your Bradford Risbert Convict Cichlids, as they interact with each other and their environment.

## : The Bradford Risbert Convict Cichlid - A Captivating Addition to Your Aquarium

The Bradford Risbert Convict Cichlid is a captivating species that combines striking aesthetics with engaging behavior. Its unique zebra-like pattern, robust build, and territorial nature make it a fascinating addition to any freshwater aquarium.

By understanding its habitat, care requirements, and breeding habits, you can provide an optimal environment for these vibrant and dynamic fish. Whether you're a novice aquarist or an experienced hobbyist, the Bradford Risbert Convict Cichlid offers an enriching and awe-inspiring experience.



### The Convict Cichlid by Bradford Risbert

★★★★☆ 4.6 out of 5

Language : English  
 File size : 915 KB  
 Text-to-Speech : Enabled  
 Screen Reader : Supported  
 Enhanced typesetting : Enabled  
 Print length : 14 pages  
 Lending : Enabled

FREE

DOWNLOAD E-BOOK



## **Slightly Higher Interval Training For 5k Runners: A Comprehensive Guide to Enhanced Performance**

Interval training has become an indispensable component in the training regimens of 5k runners worldwide. It offers a unique blend of intensity and recovery, challenging...



## **Lazarillo de Tormes and the Swindler: A Tale of Deception and Wit**

The story of Lazarillo de Tormes and the swindler is a classic tale of deception and wit, which has captivated readers for centuries. This picaresque novel,...